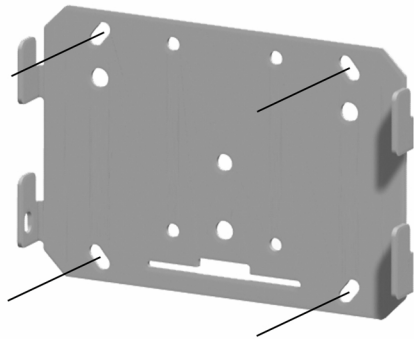


Mounting Instructions

Fixed VESA Screen Brackets
052.3000 / 052.4000

1



Mounting base plate

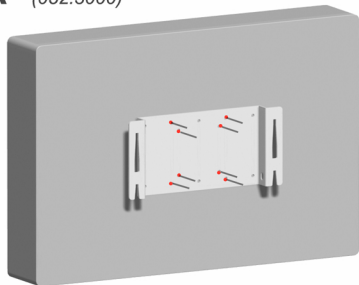
Mount the basis plate to the wall. Use the four outer mounting holes (170x140mm). Leveling the base plate is possible.

The other mounting positions will be used in other configurations (ceiling mount or flat screen stand)

2

A (052.3000)

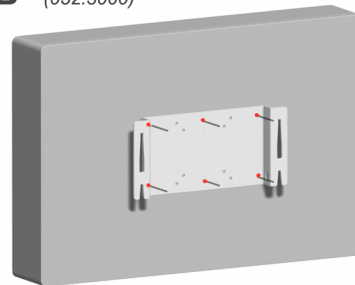
VESA 75
VESA 100



Mount the connecting plate at the back of the screen using the VESA 75 or VESA 100 mounting holes (landscape or portrait). Use the supplied mounting material.

B (052.3000)

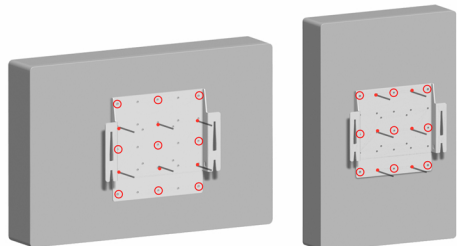
VESA 100-200
(landscape)



Mount the connecting plate at the back of the screen using the VESA 200-100 mounting holes (landscape). Use the supplied mounting material.

C (052.4000)

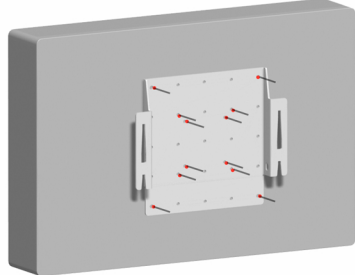
VESA 100-200
(landscape or portrait)



Mount the connecting plate at the back of the screen using the VESA 100-200 mounting holes (landscape or portrait). Use the supplied mounting material. Instead of the 6 mounting holes in the middle (-) the other holes (0) also can be used (for positioning bracket out of the middle of the screen).

D (052.4000)

VESA 75
VESA 100
VESA 200



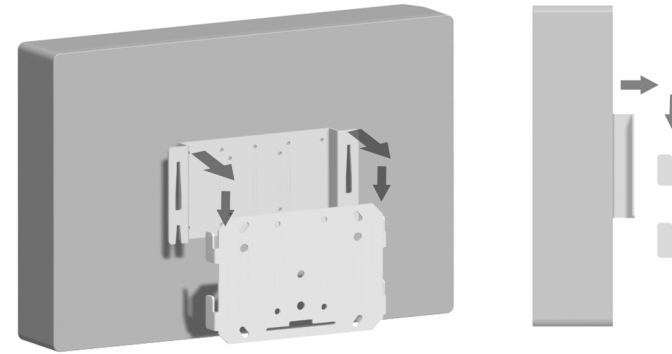
Mount the connecting plate at the back of the screen using the VESA 75, 100 or 200 mounting holes (landscape or portrait). Use the supplied mounting material.

Mounting Instructions

Fixed VESA Screen Bracket
052.3000 / 052.4000

3

Connecting flat screen to base plate

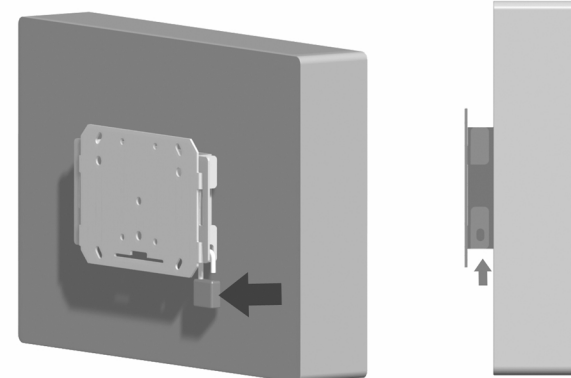


Attach the connecting plate to the base plate.

see example

4

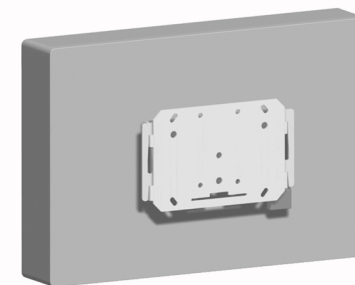
Securing VESA bracket



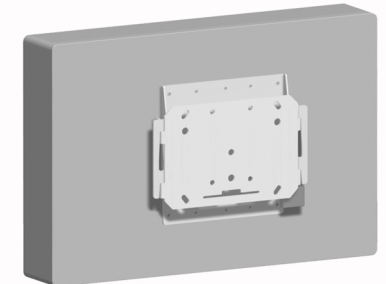
Optional:

The VESA screen bracket can be locked with an anti-theft lock on the side of the bracket.

5



052.3000



052.4000